

Issue: November 30, 2008

# Hilo Roman Catholic Community



## St. Joseph Church

43 Kapiolani St., Hilo, HI 96720  
Office Hours: Mon.- Fri. 8:00 am - 4:00 pm  
Phone: (808) 935-1465 Fax: (808) 969-1665  
Emergency after-hours number: 899-9453



## Malia Puka O Kalani Church

326 Desha Ave., Hilo, HI 96720  
Office Hours: 8:00 am - 12:00 Noon  
Phone: (808) 935-9338

## Mass Schedule

### St. Joseph Church

#### Weekdays:

Mon. - Fri.

6:00 am & 12:15 pm

#### Legal Holidays:

7:00 am

Saturday: 7:00 am

Vigil Mass: 5:00 pm

Spanish Mass:

7:00 pm

#### Sunday:

St. Joseph Church

7:00 am, 9:00 am,

11:30 am & 6:00 pm

### Malia Puka O Kalani Church

Sunday: 9:00 am

### St. Joseph Elementary School Chapel

Tuesday & Friday

7:00 am

## Confession:

Saturday

10:00 am - 11:00 am

St. Joseph Church  
or by appointment

\*Please note:  
confession schedule  
does not apply  
during some  
liturgical seasons.



## *First Sunday of Advent*

*Father in heaven, our hearts desire the warmth of your love and our minds are searching for the light of your word. Increase our longing for Christ our Savior and give us the strength to grow in love that the dawn of his coming may find us rejoicing in his presence and welcoming the light of his truth. We ask this in the name of Jesus the Lord. Amen! Today's Missal 1st Sunday Advent Prayer*

## Important Dates

**Sunday, Nov. 30**  
**First Sunday of Advent**

**Sunday, Dec. 7**  
**Second Sunday of Advent**

### **YOUTH MASS**

**Dec. 14, 6:00 pm**  
**Dec. 25, 11:30 am**

**Monday, Dec. 8**

**HOLY DAY  
OF OBLIGATION**

**Immaculate  
Conception Mass  
Schedule**

**6:00 am / 12:15 pm**

**St. Joseph**

**6:00 pm / Malia**

**7:00 pm / St. Joseph**

*\*Sr. Marykuty and Sr.  
Ruth will be renewing their  
vows at the 7:00 pm Mass.*

**Sunday, Dec. 14**

**Jubilee Mass**  
**Fr. John Mbinda**  
**40<sup>th</sup> Anniversary**  
**of Ordination**  
**6:00 pm / St. Joseph**

**Sunday, Dec. 21**

**6 pm Mass**  
**at St. Joseph**  
**Installation of**  
**Fr. Thomas as Pastor**  
**Bishop Larry Silva**  
**will preside**

**Tuesday Dec. 23**

**Advent**  
**Penance Service**  
**7:00 pm / St. Joseph**

## Pastor's Corner

*Rev. Thomas Purayidathil, Ph.D.*

### THE HOLY SEASON OF ADVENT

This Sunday (November 30) we begin the season of Advent. Advent has a twofold character: as a season to prepare for Christmas when Christ's first coming to us is remembered; as a season when that remembrance directs the mind and heart to await Christ's second coming at the end of time. Thus Advent should be a period for devout and joyful expectation. As you know the dictionary definition of 'advent' is 'the coming or arrival of something very important.' So what is coming or who is coming? We know that Jesus is coming. But has not Jesus already come? Why then should we wait for another coming? Maybe all the fuss we make does not make a lot of sense. But the truth is that he is going to be born again and again in our hearts. That is his promise. As we know, any birth calls for a lot of preparation. It is more so if we want Jesus to be born in our hearts. The Season of Advent and the entire liturgy connected with that should help us to prepare for the feast of Christmas, prepare us to receive Jesus into our hearts and into our lives anew. So we need to celebrate this season with the utmost care and devotion. Let me wish each one of you a holy and fruitful celebration of Advent!

### HEARTFELT THANKS TO EVELYN AH SING

We, the parish of St. Joseph owe a debt of gratitude to the late Evelyn Ah Sing for leaving a sizable part of her estate and money to St. Joseph Church. She has left her house and property at Wainuenue to the Church. We have listed it for sale (Realtor: Annette M. Aiona of Aiona Island Realty; phone 935-3222) for the price of \$169,000.00. The proceeds of the sale will go to the Parish Hall building fund. We thank Annette who has agreed to forego her fee for the transaction as a contribution to the Church.

We have also received \$234,804.38 from her (Evelyn's) savings account. Some of it will have to be used for the urgent maintenance need of roofing the rectory to stop the leaks and other pressing expenses needed. May her soul rest in peace!

May I exhort you to leave something for your parish in your will and testament. That is one way of supporting your parish community even after you are gone.

Praying for God's choicest blessings on each one of you! Fr. Tom

### RELIGIOUS EDUCATION UPDATE

Religious Education classes continue to be held on Sundays at the St. Joseph Jr./Sr. High school from 10:15 am through 11:05 am. Please check the R.E. calendar for dates around the upcoming holidays and school vacations. We encourage all of our families to celebrate the holiday season with us at our churches. A schedule of the masses for the Advent season was sent home with our students this past Sunday. Please refer to it for dates and times of the main liturgical events.

Sunday, December 7, 2008-R.E. classes  
Sunday, December 14, 2008-R.E. classes  
Sunday, December 21, 2008-R.E. classes  
Sunday, December 28, 2008-NO CLASSES

### ALTAR SERVER UPDATE

All St. Joseph altar servers who have signed up to serve at one of the Christmas masses must attend a training session to be held on Sunday, December 21, 2008 at 1:00 pm at St. Joseph Church. Please call Joyce Saenz at 935-1208 with any questions.

### Hilo Roman Catholic Community Mission Statement:

We, the Hilo Roman Catholic Community of St. Joseph and Malia Puka O Kalani, guided by the Holy Spirit, Our Blessed Mother and Saint Joseph, gather as a family of believers in the celebration of the Eucharist. Blessed with many cultures, talents and inspired by the Hawaiian tradition of Aloha, we pledge to share our heritage, our gifts and the principles of our faith, and to commit ourselves to the educational, social and spiritual needs of all our brothers and sisters.

**November 30, 2008: First Sunday of Advent, Year B**

**Theme: Stay Awake Always; Be Prepared**

Readings: Isaiah 63:16b-17, 19b; 64:2-7; 1 Cor. 1:3-9; Mark 13:33-37

**First Reading: Isaiah 63:16b-17, 19b; 64:2-7**

These words give voice to the cry of a people who are broken and in need of restoration. They call upon the Lord to return to them and to show again the favor of his presence. Yet they realize that he has not walked out on them, rather it is they who have been unfaithful to him. God is addressed as Father and Redeemer because human attempts at salvation have failed. The sought-for solution is a manifestation of God's power from on high (63:19), yet this hope stands in contrast to the real fulfillment of God's power we have experienced — it comes not in awesome splendor but incarnate in humble human flesh: Jesus, Son of Mary.

Note that the entire prayer (63:7-64:11) recalls God's past favors as motive for confidence in seeking his saving work in the present. This gives us an example of the type of ancient Jewish prayer from which the Christian Eucharistic prayer developed.

**Responsorial Psalm: Psalm 80:2-3, 15-16, 18-19**

This prayer depicts God as the caretaker of his people, and it utilizes the imagery of a vineyard. Read the whole psalm carefully — it reflects both fear of destruction and danger, as well as confidence in God's protection and restoration. Response: "Lord, make us turn to you, let us see your face and we shall be saved."

**Second Reading: 1 Corinthians 1:3-9**

Paul's first letter to the church at Corinth tackles problems of an early, small Christian community — they are newborn infants living in a hostile atmosphere. This passage is from the greeting, but the apostle already gives the key to his teaching: unity in Christ is both the means and the goal of the Christian life (v 9). Salvation comes from God's power, not from human wisdom (v 7), but this salvation is not a once-and-for-all gift; it is a growing, ever-expanding reality (v 8).

**Gospel: Mark 13:33-37**

Advent begins with a call to watchfulness. This Gospel passage concludes Jesus' teaching on the signs that would characterize the last days — indeed, those very signs have been a part of every age. Jesus is not giving a schedule to predict his final coming, but rather he is telling what sort of watchfulness is demanded of his followers. We cannot wait passively or occupy ourselves with our own interests, even if they are spiritual interests, but must work diligently for the advancement of his kingdom as his servants — each of us with our own gifts, abilities, and particular tasks (v 34). On the one hand, we are told to open our eyes to read the signs of the times (v 28), but on the other hand, even the vigilant will be surprised at the suddenness of the fulfillment (vv 36-37).

We can catch glimpses of the suddenness and surprise of the Lord's presence in our day-to-day lives, if we but look with eyes of faith.



**WELCOME  
To Our Visitors!**



## Scripture Readings

### **Sunday, Nov. 30**

Is 63:16b-17, 19b; 64:2-7

Ps 80:2-3, 15-16, 18-19

1 Cor 1:3-9

Mk 13:33-37

### **Monday, Dec. 1**

Is 2:1-5

Ps 122:1-9

Mt 8:5-11

### **Tuesday, Dec. 2**

Is 11:1-10

Ps 72:7-8, 12-13, 17

Lk 10:21-24

### **Wednesday, Dec. 3**

Is 25:6-10a

Ps 23:1-6

Mt 15:29-37

### **Thursday, Dec. 4**

Is 26:1-6

Ps 118:1, 8-9, 19-21, 25-27a

Mt 7:21, 24-27

### **Friday, Dec. 5**

Is 29:17-24

Ps 27:1, 4, 13-14

Mt 9:27-31

### **Saturday, Dec. 6**

Is 30:19-21, 23-26

Ps 147:1-6

Mt 9:35-10:1, 5a, 6-8

### **Sunday, Dec. 7**

Is 40:1-5, 9-11

Ps 85:9-14

2 Pt 3:8-14

Mk 1:1-8



**CHURCH  
Maintenance  
TEAM**

## St. Joseph Maintenance Team

I am happy to announce the Maintenance Team of St. Joseph! Thanks for your cooperation. *Fr. Thomas*

### **Maintenance Team Members:**

Team Coordinator: William Affonso

George Madden, Danie Villena, Godrey Nachor,

Gerard Callo, Richard Hudak, David Mendiola,

Evelyn Pacheco

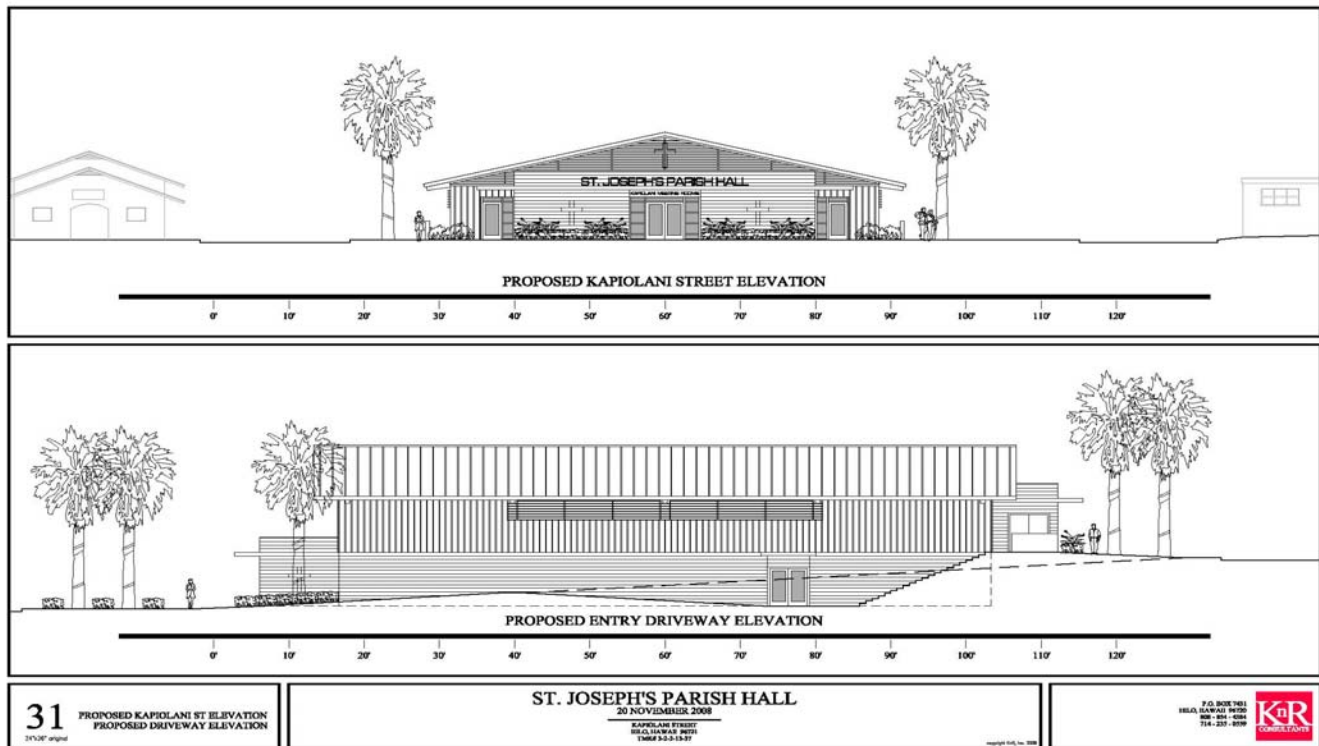
At Large Members:

Sal Panem, Kealii Beck, Larry Capellas



## **“On the Road to Our Parish Hall”**

### **YOUR CHOICE: METAL AND STUCCO—BUILDING B**



**ESTIMATED COST: \$2,759,125.00**

**(Includes: grading, asphalt paving, parking lot lighting, concrete walks & ramps, sewer line, water line, drywalls, signage, landscaping & misc.)**

A total of 120 parishioners chose the design for our new Parish hall. When tallied, the breakdown of votes was: “Traditional Construction” - Building A - 2, “Metal & Stucco” - Building B - 112, “Fiberglass Membrane” - Building C - 2, and “Other” - 4.

The next step is to send the plans to the Diocesan Building Committee for its approval. After approval is received detailed plans will be drawn, specifications will be prepared, etc. They then will be sent out for bids. When that process is complete, construction may begin after one-half of the total cost of the project is in the bank.

Bishop Larry has given us permission to continue to collect donations for the Parish Hall through our weekly envelopes. However, you must indicate the amount of your donation in the specific Parish Hall section of the envelope. If you don't use the parish weekly envelopes, please put your donation in a plain envelope. Write “Parish Hall”, your name, and the amount of your donation on the front. Checks may be put in the basket. However, make sure that you indicate on the “memo” line “Parish Hall.” Of course, donations may be dropped off at the rectory any time during the week. *Beginning January 1st specific Parish Hall Building Fund envelopes will be available.*

It won't be easy during these difficult times to amass the funds we need. However, St. Joseph parishioners have a history of doing amazing things. Our ancestors managed to build our beautiful Church in the 1900's when they didn't have material wealth, but did have a great love for God. Like them with much prayer and some sacrifice, we, too, can pass on that love to our descendents. Can't we?!  
Submitted by: Maureen Saturnio



The Thursday, November 20 , Parish Hall meeting gave parishioners an opportunity to review the design plan options and to vote.

## Black & White Nite



Ten students from St. Joseph High School volunteered recently to help with Downtown Hilo's 5th Annual Black & White Nite. Donned in black & white attire, they served as the 'Ambassadors of Black & White Nite' handing out maps and giving information to shoppers attending the event that included entertainment throughout the downtown Hilo area, games, and prize drawings. This is the 4th year we've been invited to participate, as event coordinators are always happy with our students work! Mahalo goes to (l-r): **front row:** Shan, Christina, Keiko, Shaydene, and Hunter, **back row:** Chris, Cruz, Sydney, Derek, and Jeremy.

## Feast of Our Lord Jesus Christ the King

The parish Youth & Young Adult Choir Sang at Nov. 23, 2008 Youth Mass

### JOIN THE CHOIR!

The Choir is seeking more Youth and Young Adult members. Interested call Chrislyn Villena 935-1465



## St. Joseph School Food Drive

*Collected food will go to stock our Parish Food Pantry which distributes food to those in need in our community.*



# St. Joseph School

## Balance Sheet

June 30, 2008

Assets		Liabilities and Fund Balance	
Cash	\$259,693.79	Accounts Payable	\$28,890.06
Accounts Receivable	\$85,981.40	Adv Tuition/ Unearned Rev	\$298,826.37
Prepaid Expenses	\$13,031.98	Notes Payable	\$408,109.04
Investments	\$561,384.69	Due to Other Funds	\$141,041.86
Fixed Assets	\$560,414.28	Accrued Payroll & Taxes	\$94,045.34
		Fund Balance	\$509,593.47
<b>Total Assets</b>	<b>\$1,480,506.14</b>	<b>Total Liabilities &amp; Fund Balance</b>	<b>\$1,480,506.14</b>

# St. Joseph School

## Income Statement

FYE JUNE 30, 2008

	Actual 7/1/2007 6/30/2008	Annual Budget	YTD Variance
Tuition	\$2,201,507.56	\$2,158,290.50	\$43,217.06
Student Fees (Graduation, Band, Textbooks)	\$34,505.20	\$55,370.00	(\$20,864.80)
Athletics	\$12,134.81	\$27,250.00	(\$15,115.19)
Parish Subsidy (Parish Scholarships/Kapiolani St. Convent Lease)	\$174,125.00	\$171,500.00	\$2,625.00
Development (incl. Restricted and Unrestricted Donations)	\$43,025.87	\$5,000.00	\$38,025.87
Summer School	\$7,950.00	\$0.00	\$7,950.00
Miscellaneous (incl. Lunch Program, Scholarships, Interest)	\$218,488.22	\$205,147.00	\$13,341.22
	<b>\$2,691,736.66</b>	<b>\$2,622,557.50</b>	<b>\$69,179.16</b>
Salaries	\$1,619,613.06	\$1,612,558.78	(\$7,054.28)
Payroll Taxes	\$139,681.94	\$155,747.39	\$16,065.45
Employee Benefits	\$162,736.14	\$167,829.47	\$5,093.33
Professional Fees & Services	\$58,700.69	\$70,926.01	\$12,225.32
Supplies	\$64,013.45	\$73,862.65	\$9,849.20
Organizational Dues & Subscriptions	\$7,129.34	\$7,350.00	\$220.66
Computers	\$53,454.77	\$52,300.00	(\$1,154.77)
Miscellaneous (incl. Insurance, Lunch Program, etc.)	\$195,397.39	\$187,460.00	(\$7,937.39)
Instructional Departments	\$131,281.95	\$166,076.00	\$34,794.05
Marketing	\$20,963.29	\$19,650.00	(\$1,313.29)
Athletics	\$30,026.32	\$37,500.00	\$7,473.68
Convent (Current Residence of Sisters of St. Francis)	\$18,085.01	\$23,612.70	\$5,527.69
Utilities	\$87,606.41	\$90,270.00	\$2,663.59
Vehicle Maintenance	\$3,237.08	\$2,395.00	(\$842.08)
Furniture	\$1,981.67	\$0.00	(\$1,981.67)
Deficit Reduction	\$7,142.42	\$0.00	(\$7,142.42)
Transfers	\$30,600.00	\$0.00	(\$30,600.00)
	<b>\$2,631,650.93</b>	<b>\$2,667,538.00</b>	<b>\$35,887.07</b>
	<b>\$60,085.73</b>	<b>(\$44,980.50)</b>	<b>\$105,066.23</b>

Note: St. Joseph School ended the Fiscal Year 2007-08 with a budget surplus of \$60,085.73. This is due primarily to the increase in enrollment mid-year and expenses being kept to a minimum. The school continues to pay down the loan from the diocese using the proceeds from the Kapiolani St. Convent lease. The last payment on this debt is scheduled for October 2009.

A special note about the Clifford and Kathie Dias Fund: This money is not held by the school. Mr. and Mrs. Dias have appointed a committee that reviews grant requests from the school on a yearly basis. Funding for the 2007-08 fiscal year totaled \$107,641.00. Funding for the 2008-09 year is \$41,403.00.

\*For questions please call Jeri Spain, Business Manager St. Joseph School. Ph: 808-935-4936 ext. 221





## Pre Thanksgiving Luncheon

Thanks to all who helped to make the Thanksgiving Luncheon a big success. Over one hundred and fifty individuals were served roast turkey, ham, mashed potatoes, stuffing and a fantastic selection of home baked desserts. Avalina Espina did a wonderful job of organizing this event. Mahalo!



The Parish Youth Choir entertained at the Pre Thanksgiving Luncheon



Jeannette Lesko and Nancy Capelas prepare the dessert table.



Jhunavee & Shelly serve water to thirsty Luncheon guests.



## THE GIVING TREE

One of the best ways to experience the joy of the Christmas season is to offer happiness to someone else. With this in mind the Parish Pastoral Advisory Council has once again set up a "Giving Tree" for the benefit of our brothers and sisters who need our help. Your generosity to the Giving Tree has been overwhelming for the past two Christmases. This Christmas we need your help more than ever. As was the case last year we have two trees, one at Malia and one at St. Joseph. The tree at St. Joseph is decorated with ornaments bearing the Christmas wishes of residents of Beyond Shelter Apartments located on the makai portion of our parish hall property, residents of Ponahawai Ola Prison to Community reintegration project, residents of the Kihei Pua Homeless Shelter and residents of the Faith Against Drugs program.

The tree at Malia bears the wishes of the adolescent boys in treatment with the Acadia Healthcare project, located in the Convent on Kapiolani Street. It is essential to the success of these five programs that those involved feel the support and encouragement of our parish community. It is also important that we, as parishioners, provide for the spiritual and material needs of those less fortunate. It defines us as Christians. Please fulfill one of the wishes on the Giving Tree. God will bless you for it.

How this works: Remove an ornament from the tree and fill in the log stating which ornament you took. Purchase and wrap a suitable gift and attach the ornament to the package. Malia parishioners are asked to return the gift to Malia Church by December 14th. St. Joseph parishioners may bring the gift to church and deposit it in the basket below the tree or take it to the rectory (Monday-Friday, 8 am until 4 pm) by December 14th. Should you have any questions, please call Susan Lee (St. Joseph) 969-7999 or Kathy Yamamoto (Malia) 961-3994. Thank you! Submitted by: PPAC



# Malia Puka O Kalani Church

## From Father Joe:

As you may be aware, before coming to the Hilo Roman Catholic Community and Malia I worked with at-risk adolescents in a residential treatment setting in New Jersey. The Holidays were always the most difficult time. This was made somewhat easier by a Christmas morning celebration with the kids opening gifts given by the local community and singing Christmas carols. This was a Christmas morning event that many of them had never before experienced. More times than I can count, kids would say, "This was the best Christmas I have ever had."

Now I am on the other side---the side that gives the gifts for the Christmas celebration. Malia's Giving Tree is dedicated to a 32 bed adolescent residential treatment facility in Hilo: Pu'ukamalu which means "shelter on the hill." This wonderful organization serves boys ages 11 - 18. I have been in email contact with the CEO, Joe Tinervin, who happens to originate from New Jersey! (That, already, makes him a wonderful person!!) I have not yet visited Pu'ukamalu, a member of the national Acadia Healthcare system. However, Mr. Tinervin has invited me and I plan to accept the invitation when I return from New Jersey. In the meantime, the Giving Tree will stand at the entrance to our church. From prior experience I can assure you that each gift will mean love, care, and acceptance to some kid who so desperately needs to hear and experience this. Pu'ukamalu embraces an 'Ohana model with a strong Hawaiian cultural component. Please take a "an ornament," give with your heart and your love; let your Ohana share a gift with a young brother who hungers to belong. Bring your gift(s) to the church no later than Dec. 14. We will make sure they get to your brothers at Pu'ukamalu. Thank You!



*Thank you  
for the  
wonderful  
Thanksgiving  
Brunch!*

**Mary, Gate of Heaven, pray for us.**



*Mass Intentions  
Please pray for those  
in the Book of Life.*

*Aunty Irene Kondo  
Kahele Ohana  
Aunty Patty Grube  
Uncle Tony Moniz  
Aunty Minnie Alidon  
Uncle Tommy Gouveia  
Aunty Dora Costa  
Aunty Mamo Otineru  
Aunty Nita Kua  
Aunty and Uncle Dulatre  
Eleanor Birney  
Aunty Mabel Silva  
Dona Watson  
Rita Cusick*

## Our Volunteers for Sunday, December 7, 2008

### Church Cleaning

*Natalie*

### Flowers

*Maybelle / Shirley*

### Sacristan

*Moke*

### Altar Servers

*Kayla / Kekona*

### Lectors

*Freida / Laverne*

### Eucharistic Ministers

*Samantha / Patty*

### Bell Ringers

*Pete / Melody*

### Money Counters

*Kathy / Laverne / Natalie*



**Food Pantry:** Please remember our brothers and sisters who need our help by bringing food donations every week with you to Mass.

## Financial Notes: *November 23, 2008*

**Koa Bowl \$ 1,318.67**

*The estimated average Koa Bowl Collection needed each week to support ourselves is:  
\$1,500.00 - Fr. Joe*

## ATTENDANCE

**Adults 80  
Children 13**

**Saint Joseph 11/17/08**

**Malia 11/20/08**

**60 persons served**

**17 persons served**





Christ the King gifted with leis.



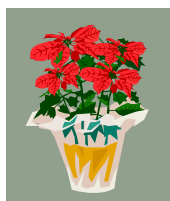
The sanctuary is decorated with kahili — symbols of royalty.



Gabbie and Keola, newly baptized, with their family.

### Decorations for Advent & Christmas needed

Two more wreaths are needed for Dec. 14 (Rose Color) and Dec. 21 (Purple). Please contact Natalie or Uncle Moke if you can share a wreath for Advent.



We are looking for donations of poinsettias for Christmas Eve. / day. Aunty Freida would like them no later than Tuesday, Dec. 23. Any questions please call Freida Lee at 960-3116.



Cassandra, newly baptized, surrounded by her family and Fr. Joe.

## Directory

Emergency after-hours number: 899-9453

### Pastor:

Rev. Thomas Purayidathil, Ph.D.

Associate Priests:

Rev. John M. Mbinda

Rev. Joseph Hennen

Hispanic Ministry:

Rev. John Fredy Quintero

### Deacons:

Rev. Don Aanavi

Rev. Jerry Nunogawa

St. Joseph School Principal:

Sr. Marion Kikukawa, OSF

935-4936

### Office Staff & Ministries

Business Manager: David Watson

Pastoral Assistant: Sr. Marykutty

Social Outreach: Sr. Ruth Zonunthari

Receptionist: Robyn Whittington

Housekeeping: "Cres" Castillo

Maintenance: Robert Balga

Religious Education Coordinator:

Joyce C. Saenz 935-1202

Youth & Young Adult Ministry:

Chrislyn Villena 935-1465

Security & Maintenance:

Mario Miguel 990-9137

Liturgy Coordinator: Cecil Farin

Music Ministry:

Gloria Mendoza-Watson

Alabare Choir: Godfrey Nachor

Aloha Choir: Sylvia Young

Engaged Encounter: 961-2442

Fred & Patti Basilio

Marriage Encounter: 935-8464

Deacon Jerry & Rose Nunogawa

Rite of Christian Initiation

of Adults: Carol Denis

Adult Scripture Study:

Deacon Don Aanavi

Prison Ministry: John Aguiar

935-8392

Parish Pastoral Advisory

Council: Anna Texeira

Finance Council: Don Kouchi

Bulletin Coordinator:

Karen Hotniansky

Prayer Network: Kathy Choi

Call rectory: 935-1465

with your prayer request

## Our First Week In Hilo

*It was the great dream of the Missionary Sisters of Mary Help of Christians to be with the beautiful people of Hawaii which is blessed with many cultures and natural beauty. This has come true as Srs. Marykutty and Ruth, landed on 15th of November in Hawaiian land, with mixed feelings of awe and wonder. We had a warm welcome at the airport from Fr. Tom and the representatives of the Parish in a Hawaiian Traditional way. The words of Jesus "Go proclaim the Good News" and "I will be with you" continue to echo in our hearts as we spend each day in the company of the "Lord and one another." We are inspired every moment by the Hawaiian tradition of Aloha and at all times appreciative of the rich heritage of this beautiful land. We feel at home to be with our people and to work with them for the establishing of the Kingdom of love and Peace.*

*Sr. Marykutty*

## Sacraments

### Anointing of the Sick:

Contact the rectory office for arrangements.

### Baptisms: Infant (under 7)

Preparation sessions for parents available 9 times a year. Call the rectory office to register at 935-1465.

### Baptisms: (over 7-adult) / First

### Communion / Confirmation:

Joyce C. Saenz 935-1202

### Hospital Communion:

Donna Saiki 935-7801

### Home Communion:

Joanne Kahaloa 961-2726

**Marriages:** Contact rectory office at least 6 months in advance.

**Funerals:** Contact rectory office before meeting with funeral director.

### ST. JOSEPH CHURCH WEEKLY COLLECTION

5:00 pm	\$ 1,447.00
Spanish Mass	\$ 69.00
7:00 am	\$ 2,333.00
9:00 am	\$ 2,250.00
11:30 am	\$ 1,520.00
6:00 pm	\$ 1,224.00
Sunday Total Collection	\$ 8,843.00
Candles	\$ 273.30
Donations/ Others	\$ 1,145.20
Total Other Revenue	\$ 1,418.50
RESTRICTED DONATIONS	
Bldg. Maint. Fund	\$ 618.00
Parish Hall Fund	\$ 1,440.00
School Fund	\$ 376.00
World Mission	\$ 29.00
Mission's Appeal	\$ 365.00
Misc.	\$ 7,060.00
Total Restricted Donations	\$ 9,888.00
Total Weekly Deposit	\$ 20,149.50
Parish Hall Fund to Date	\$108,380.50

## This Week's Calendar

### SUNDAY, Nov. 30

### MONDAY, Dec. 1

- 10:00 am • Aloha Choir Rehearsal/St. Joseph Church
- 12:00 pm • Food Pantry/St. Joseph Rectory Meeting Room
- 1:00 pm • Spiritual Support Group/St. Joseph Church Breezeway
- 6:00 pm • RCIA Classes/St. Joseph Rectory Library
- 6:00 pm • Youth & Young Adults Choir Rehearsal/St. Joseph Church

### TUESDAY, Dec. 2

- 7:00 am • St. Joseph School Mass/St. Joseph Elem. Chapel
- 5:00 pm • Religious Ed Board Meeting/Religious Ed Office (SJHS)
- 5:00 pm • Faith Against Drugs Board Meeting/St. Joseph Rectory Meeting Room
- 7:00 pm • Basic Christian Community/YMI
- 7:00 pm • Novena (Rosary 6:30 pm)/St. Joseph Church

### WEDNESDAY, Dec. 3

- 12:00 pm • Food Pantry/Malia Puka O Kalani Church
- 6:30 pm • Alabare Choir Rehearsal/St. Joseph Church

### THURSDAY, Dec. 4

- 5:00 pm • Cursillo Group/St. Joseph Rectory Library
- 7:00 pm • St. Joseph Choir Rehearsal/St. Joseph Church

### FRIDAY, Dec. 5 "First Friday"

- 1:00 pm • Adoration/St. Joseph Church
- 6:00 pm • Benediction/St. Joseph Church

### SATURDAY, Dec. 6

- 7:45 am • Church Cleaners #5/St. Joseph Church
- 10:00 am • Adult Scripture Study/St. Joseph Rectory Library
- 5:00 pm • High School Youth Group/St. Joseph Rectory Library
- 7:00 pm • Spanish Mass & Fellowship/St. Joseph Church & Rectory Meeting Rm.

### SUNDAY, Dec. 7

- 10:15 am • Religious Ed Classes/SJHS
- 2:00 pm • Baptism/St. Joseph Church

*Eternal Rest  
Grant unto them  
O Lord and let perpetual  
light shine upon them*

*† We remember in prayer all  
the departed and most es-  
pecially our loved ones in  
this month of All Souls.*





### Serving in Hilo

Sister Marykuty and Sister Ruth Zonunthari have come to assist us here in the Hilo Roman Catholic Community. The parish is renting a house for them, however, we still need some assistance with furnishing their home. If you are able to donate a

new or gently used item from our wish list or would like to make a donation towards these items, please call David Watson, the Business Manager at 935-1465.

#### Convent Wish List

- New twin mattress pads (3 needed)
- Shower rug
- Vacuum
- Mixer
- Placemats
- 3 outside doormats
- Ironing board and Iron
- Car—preferably a Toyota Sienna or Honda CRV



*Extending a heartfelt thanks to Floor Décor for their generous donation of a new area rug for the conference room.*



Christ is counting on you . . . .  
to find out more about Cursillo.  
Contact Joyce Berrios  
966-6763



**MetroCare**  
HAWAII, LLC  
COMPASSION • CARING • COMMITMENT



Providing Home Care Services for East & West Hawaii

- Private Duty Care
- Certified Nurse Assistance
- Companionship
- Standby Care
- RN & LPN
- Personal Care
- Respite Care
- Homemaker
- 24 hrs. Care

Contact: 808-934-8334 or 808-430-0687  
and ask for Vincent for more information.

Hawai'i Island's leader for the finest quality  
CUSTOM MADE DRAPES and BLINDS

**Paul's Enterprises, Ltd.**

Serving you since 1946



Recognized Name Brands

- Hunter Douglas
- Mohawk
- Wilsonart
- Shaw
- Kirsch

In House Design, Manufacturing and Installation team  
• Carpet • Laminates • Vinyls • Window Covering

110 Hualalai Street • Hilo • Phone 961-3018



**Facial & Body Treatments**  
Knowledgeable Service & Luxurious Products  
Will transport you to a world of relaxation, results & overall wellness!  
Gift Certificates Available  
**Kim Delima**  
Licensed Skin Care Specialist  
935-3567

**Jo's Computer Services**  
Service, Repair, Rental Computer, Network, Server, Scanner, Printer Copier, Fax, Video Projector, Slide Show, Web Design  
P.O. Box 311, Papaikou, HI 96781  
**Brad Fukuchi**  
808-896-3831



**BORTHWICK**  
Hawaii Funeral Home  
570 Kinoole Street  
# 935-8445



**CATHOLIC CHARITIES HAWAII**  
Helping people in need to help themselves, regardless of their faith.  
**Hawai'i Island Program Services:**  
- Adult Foster Homes  
- Immigration and Employment Services  
- Therapeutic Foster Care  
- Foster Parent Training  
- Transitional Housing for Homeless Families  
East Hawai'i: 935-4673 (HOPE)  
West Hawai'i: 331-4763 (HOPE)  
**Statewide HELP Line:**  
Provides information, help with applications for emergency assistance and referrals to CCH programs or other local resources.  
933-4357 (HELP)  
331-4357 (HELP)  
**Cars for Catholic Charities**  
You can donate your car to help support programs serving youth, families, immigrants, and seniors.  
Cars Donation Program: 961-7122  
www.CatholicCharitiesHawaii.org

Help me to grow my business!  
**RAINA L. W. SANTOS, R(S)**  
**Prudential**  
Orchid Isle Properties  
101 Hualalai Street, Hilo, HI 96720  
santosraina@yahoo.com  
www.RealEstateHawaii.com  
Bus: 808-959-7863  
1-800-789-4753  
Cell: 808-443-8659  
Fax: 808 935-7405  
An independently owned and operated member of the Prudential Real Estate Affiliates, Inc.

**Celeste G. Santos**  
REALTOR GRI  
**Prudential**  
Orchid Isle Properties  
101 Hualalai Street, Hilo, HI 96720  
E-mail: cgs@celestegsantos.com  
Bus: 808/969-7863 935-8543  
Res: 808/935-6225  
Take advantage of my 30+ years of experience.



**Hank Correa**  
REALTY, LLC  
Correa Professional Building  
630 Kilauea Avenue, Suite 101  
Hilo, Hawaii 96720  
**Henry "Hank" Correa, Jr**  
Realtor, CCIM, CRB, CRS, GRI  
Business (808) 961-3300  
Cell (808) 960-2626  
Toll Free 1-877-500-HANK (4265)  
www.HankCorrea.com  
Email: Hank@HankCorrea.com



**HAKU FORMALS BOUTIQUE**  
Bridal • Prom  
Tuxedo (Retail & Rental)  
Wedding Accessories  
Heirloom Preservation  
Wedding Coordination  
In-House Custom Sewing  
& Alterations  
**808-934-9599**  
**Tressie Kapono**  
Special Occasion Alterations / Designer  
1059 Kilauea Avenue • Hilo, Hawaii 96720 • Fax: 808-934-8599  
Hours: M-F 10am-5pm; Sat 11am-4pm; Closed on Sunday  
www.hakuformals.com



**Dodo Mortuary, Inc.**  
199 Wainaku Street • Hilo, Hawaii 96720  
tel. (808) 935-5751  
fax (808) 935-1074 • cell (808) 987-3235  
email: mitchell@dodomortuary.com  
www.dodomortuary.com

**ST. JOSEPH SCHOOL**  
Quality Education in the Catholic Tradition  
Since 1869

#### Offering:

- ♦ College-Prep Education
- ♦ Montessori-Based Preschool
- ♦ Caring, Secure Environment
- ♦ Tuition Assistance

**For Information Call 933-1459**





*Aiona*  
Island Realty, LLC

Annette M. Aiona, R, PB, ABR  
Bus 935-3222 Cell 895-0075  
www.HomesByAnnette.com



**AIONA**  
CAR SALES  
& SERVICE

Service & Integrity  
A Family Tradition

SALES  
134 WIWO'OLE ST  
935-9958

SERVICE  
212 HOLOMUA ST  
935-9991



**Pacific Properties**  
400 Hualani St. #292, Hilo, HI 96720

**Jesusa S. Fernandez, RS**

(808) 769-0218 Cell  
(808) 981-0711 Office  
(866) 981-0711 Toll Free  
(808) 981-0088 Fax jfernandez@erahilo.com

**C.W. MAINTENANCE, INC.**  
JANITORIAL SERVICES

WINDOW / FLOOR / HIGH PRESSURE CLEANING  
HOUSE / APT. ROUTINE CLEANING OR (MOVE IN OR OUT)  
CONSTRUCTION CLEAN-UP

56 Wiwoole Street  
Hilo, HI 96720  
Bus. (808) 935-8543  
cwmaint@hiinfo.net

**FREE ESTIMATES**  
**Celeste G. Santos**  
President & Owner

**Paul J. Saviskas**  
www.saviskasart.com

HIGHEST QUALITY CRAFTSMANSHIP  
FREE STANDING SCULPTURES CUSTOM SCULPTED  
METAL GATES, RAILINGS AND ENTRANCE WAYS

PHONE / FAX: (808) 968-8073  
PO Box 685 • Mt View, HI 96720

**Michael Teixeira**  
PRESIDENT

**BUSINESS AUTOMATION, INC.**

507 E. Lanikaula St.  
Hilo, HI 96720  
(808) 935-9355

FAX: (808) 969-6932  
EMAIL: bauto@hialoha.net

**www.bigislandtoyota.com**

*Aloha! My belief is that customer satisfaction is of the utmost importance. I will be available to answer any questions or concerns that may arise. Mahalo!*

**ED TAVARES**  
Sales & Leasing Associate  
Cell: 987-1073

**BIG ISLAND TOYOTA**  
CUSTOMERS FIRST SINCE 1962

HILO: 811 Kanoelehua Ave. 935-2920  
Pre-Owned Super Center: 175 Wiwoole St. 961-3015

**MATTOS ELECTRIC**  
Commercial Residential  
"Quality Service Backed by Years of Experience"

Free ESTIMATE • Trouble Calls  
• New Installations • Repairs  
Call (808) 969-7982 or 960-2586  
Owner: Ernest Mattos

**Benevides Plumbing Service**  
C-26709

**Anthony L. K. Benevides**  
Owner 960-3399

**Jon-A-ThaZ Sounds**

for all kinds of parties  
Jonathan Q. Albano  
(808) 982-9210

Keaau, HI 96749-8109

**David** 808-960-8467  
808-966-4469

**Mahealani Construction**  
LIC # BC27495

Foundation Framing Finish  
Residential & Commercial

**FREE ESTIMATES**

**10%-60% off**  
on all flooring  
& window coverings

**BUILDING OR REMODELING?**  
Let us help you make your house a home!

**KENNY & DIANA YAMAMOTO**

- Design Consultation
- FREE Estimates
- 30 Years of Flooring Industry Experience

CARPET • VINYL • LAMINATE • HARDWOOD  
CERAMIC TILE • GRANITE • EXOTIC WOODS  
WINDOW COVERINGS

1717 Kamehameha Avenue • Hilo, HI 96720  
Tel (808) 961-6360  
Mon-Sat 8:30-5; Closed Sun

**floordecor**  
Making your house a home

**www.floordecorhawaii.com**

**www.bigislandhonda.com**

**BIG ISLAND HONDA**

**124 Wiwoole St • Hilo • 934-0907**

Thank you to our advertisers!